

Farm Intelligent System solution

System Compose: CCTV\Burglar Alarm\PA

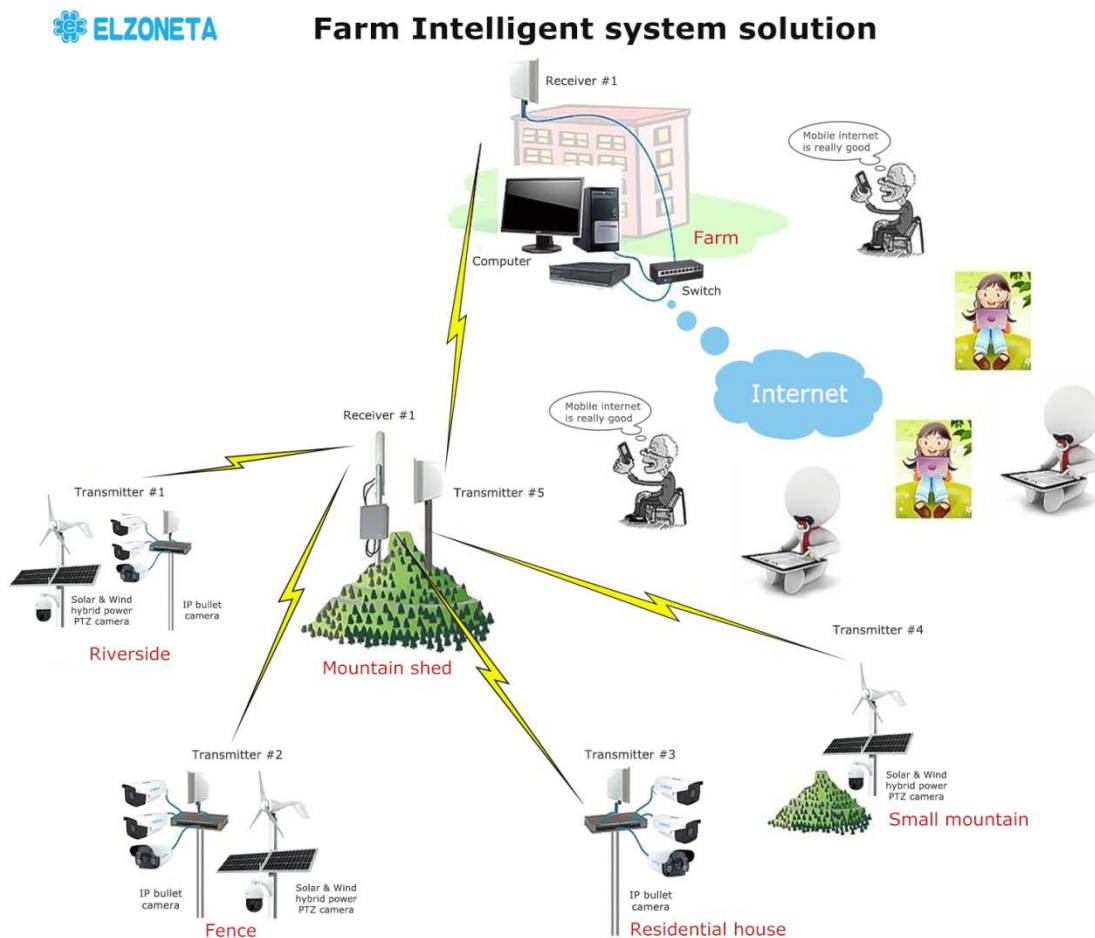
Main functions:

- *Real-time monitoring for priority regions of the farm, full-color night vision, regional alert;
- *Solar and wind hybrid power supply, wireless bridge remote transmission of data signal;
- *Electronic fencing and infrared targeting;
- *Background music playback and broadcast features.

Main functional features:

- *Super wide angle and High speed dome camera for full-range monitoring;
- *Real-time monitoring for regional alert.
- *Power supply by solar energy system, long-distance data transmission by wireless bridge;
- *Full color video for star light vision and black light vision cameras at night;
- * All details of PA broadcasts system.

System architecture diagram:



Real-time monitoring function:

Real-time monitoring is carried out by the cameras installed in the monitoring target area, and the dynamic image of the target is remotely transmitted to the monitoring center. Meanwhile, it can take real-time control and remote control for all the cameras in the monitoring area, including left and right moving, up and down moving, focusing, zoom, screen switch, remote switch, etc.

Recording function:

It can save live video data at any time by means of timed schedule recording, alarm recording, manual random recording etc. According to the authorization, the monitoring personnel can query and call the historical video for viewing.

Alarm function:

Perfect connect with perimeter alarms system, burglar alarms and other systems.

Supporting large-scale networking function:

The above mentioned industrial image systems can be hierarchically networked to achieve centralized, hierarchical, and unified management.

Applicable projects- Communication Base Station, Farm, Nation forest Park, Natural reserve etc.

No matter big or small of your security system projects are available from Elzoneta which will provide full range of high quality security system products and perfect design of security system solutions all the time.